

PRESCOUTER

# COP26's Impact on Corporations

Prescouter Sustainability Services

VIRTUAL SUMMIT

*December 8<sup>th</sup>, 2021*



# Hosted by



**Eric Joyce**

Director Sustainability,  
PreScouter

Over Eric's last 8 years at PreScouter, he has helped the world's largest companies access the expertise, intelligence and analysis needed to make more informed decisions. He takes pride in providing client-centric actionable recommendations to support our clients' innovation, R&D and sustainability goals.

# With expert insights from



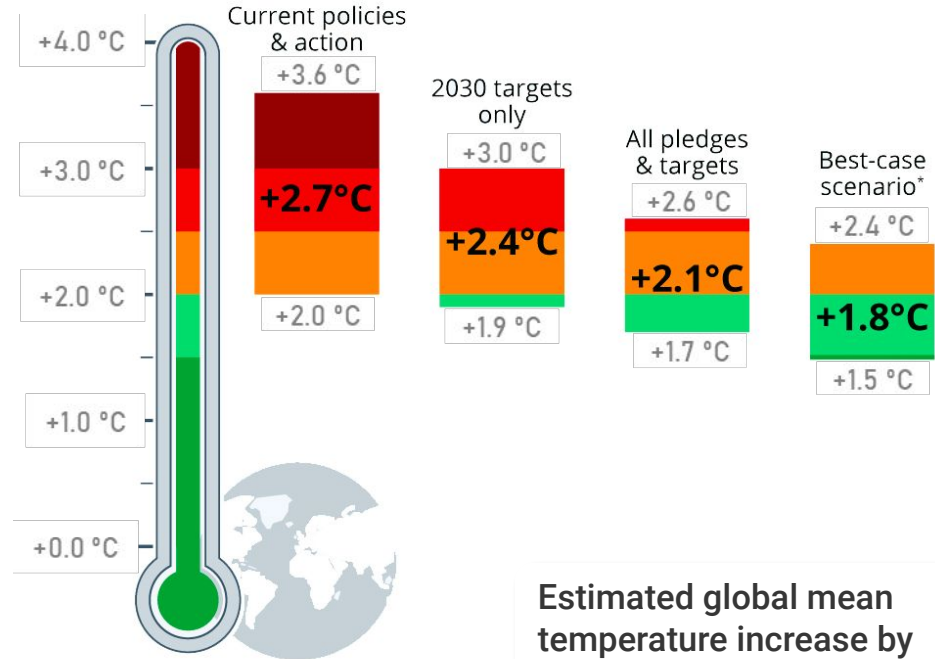
**Baishakhi Sengupta**

Subject Matter Expert,  
PreScouter

- 20+ years expertise in climate change and sustainability
- Advisor to the UK parliament and senior officers at the UK environmental agency
- Edie Sustainability Awards 2019 winner. Invited as guest speaker to EdieLive Conference 2019, Linacre College (Oxford), Ener-con Europe (Berlin)
- Developed the British Standards Institute National case study on success of ISO 50001 as a tool to drive decarbonization
- For clients and employers has consistently generated 7-figure savings through programmes that drive better energy management and decarbonization.

# COP26 - Key Takeaways & Mandates

- BAU disruption is on the cards beyond 2030, as Nationally Determined Contributions (NDCs) are not enough
- Global standard on Netzero declarations for non-state sector by December 2022
- **TCFD** disclosures mandatory in G7 countries
- **Carbon Border tax** for global supply and distribution
- **Carbon labelling** required for taxation disclosures (SDR)

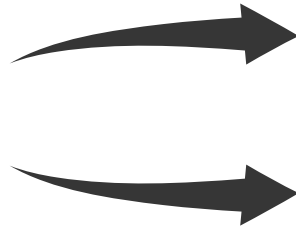


Source: [Statista](#)

Estimated global mean temperature increase by 2100, by scenario

## COP26 - Key Takeaways & Mandates

# Carbon Labelling



GHG inventory scope 1, 2 and 3 emissions

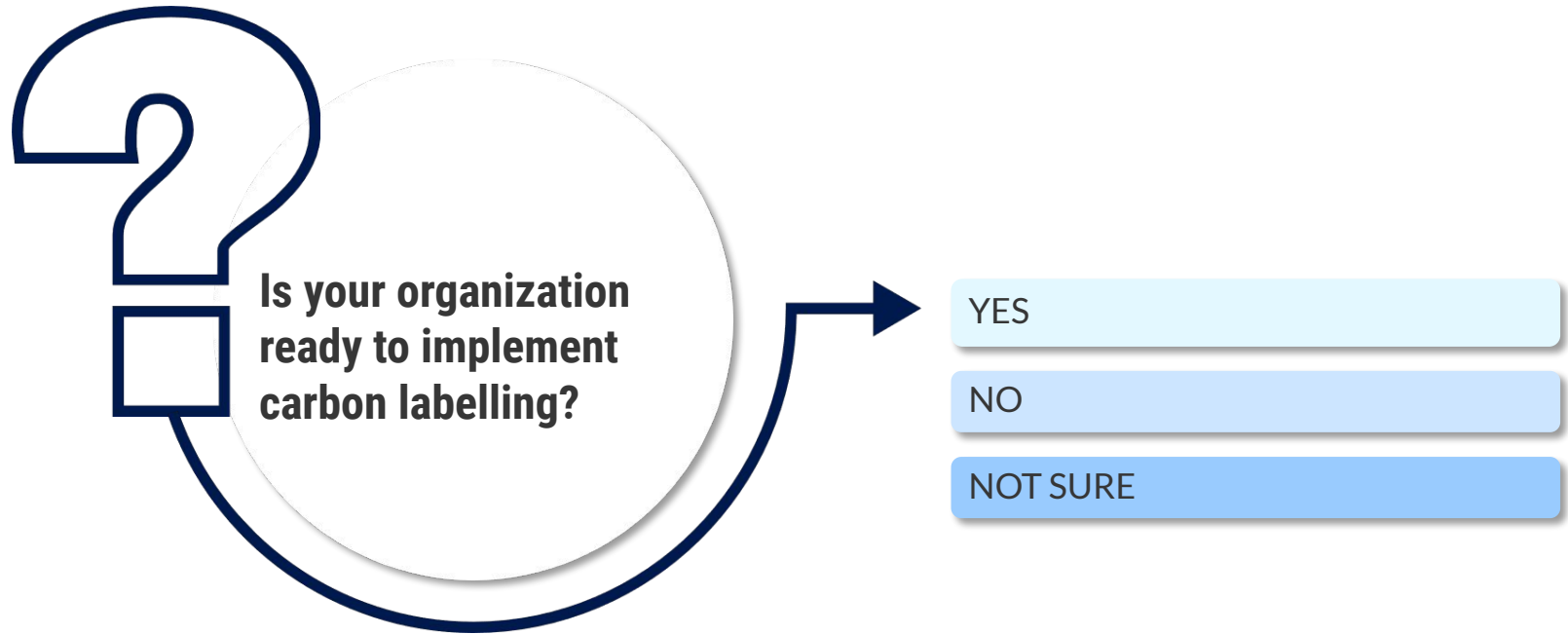
Will be mandated by December, 2022



### ADDITIONAL RESOURCE

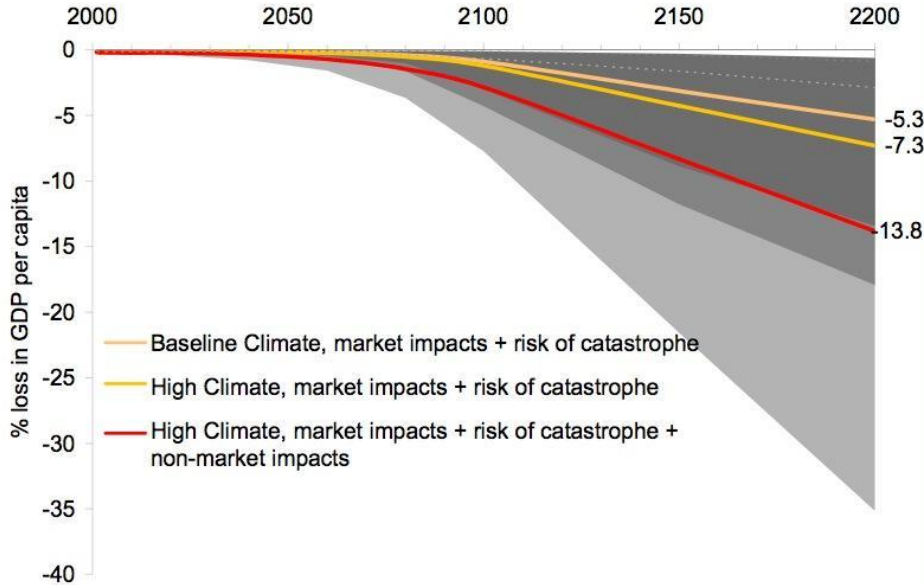
[Achieving Greenhouse Gas Goals: How Organizations Can Measure and Reduce Carbon Emissions](#)

# Poll

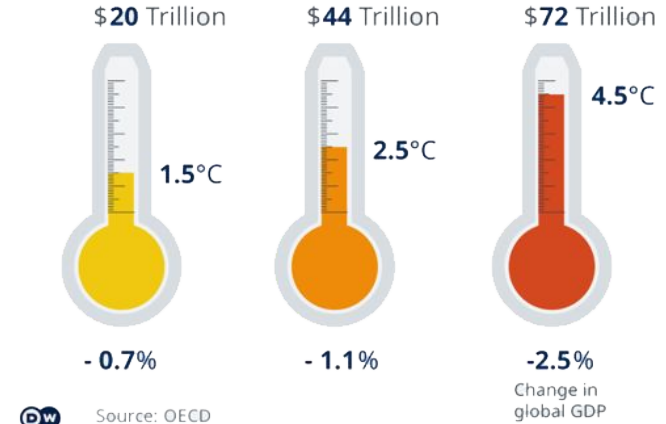


# COP26 - Key Takeaways & Mandates

2007 predictions were way off - projecting no imminent climate risks until **2100**



## Damage to GDP from rising temperatures

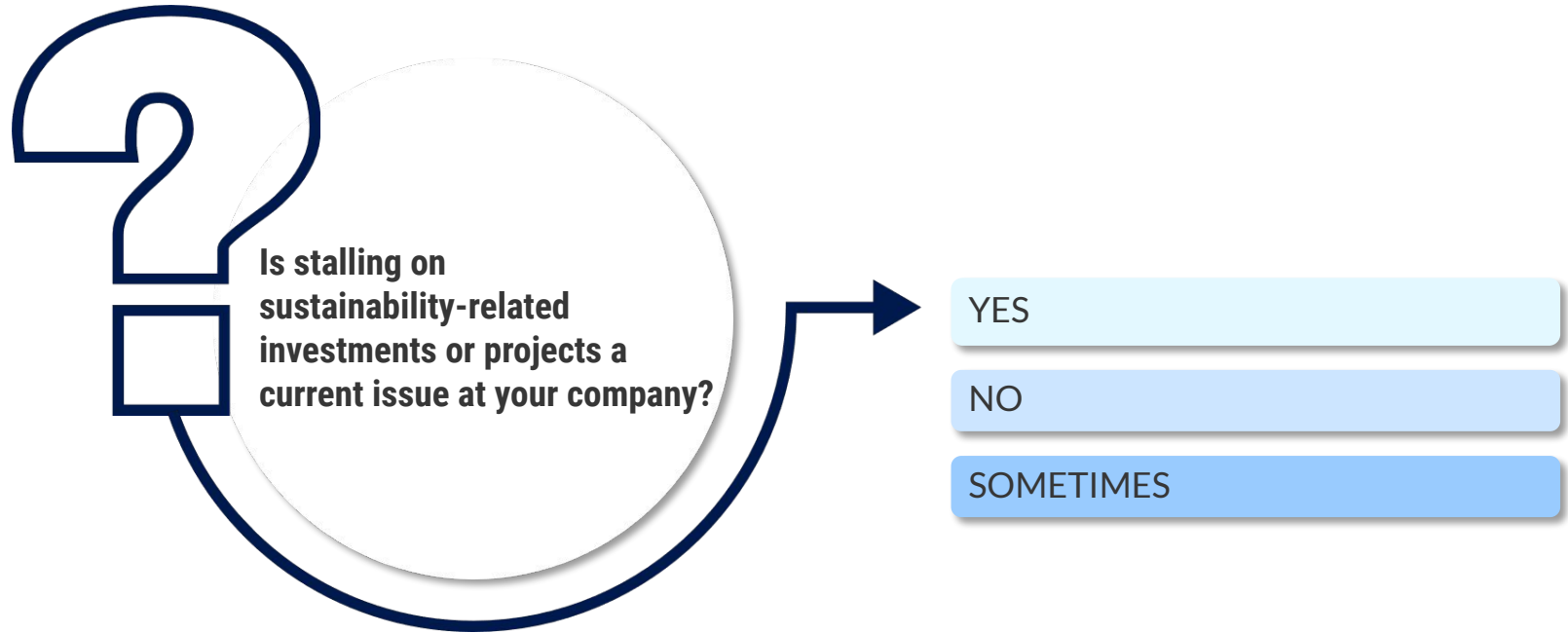


Current projections now estimate by **2035**, the Earth has high probability to cross 1.5 degrees Celsius warming.

# The financial risk continues to increase with delayed action.



# Poll



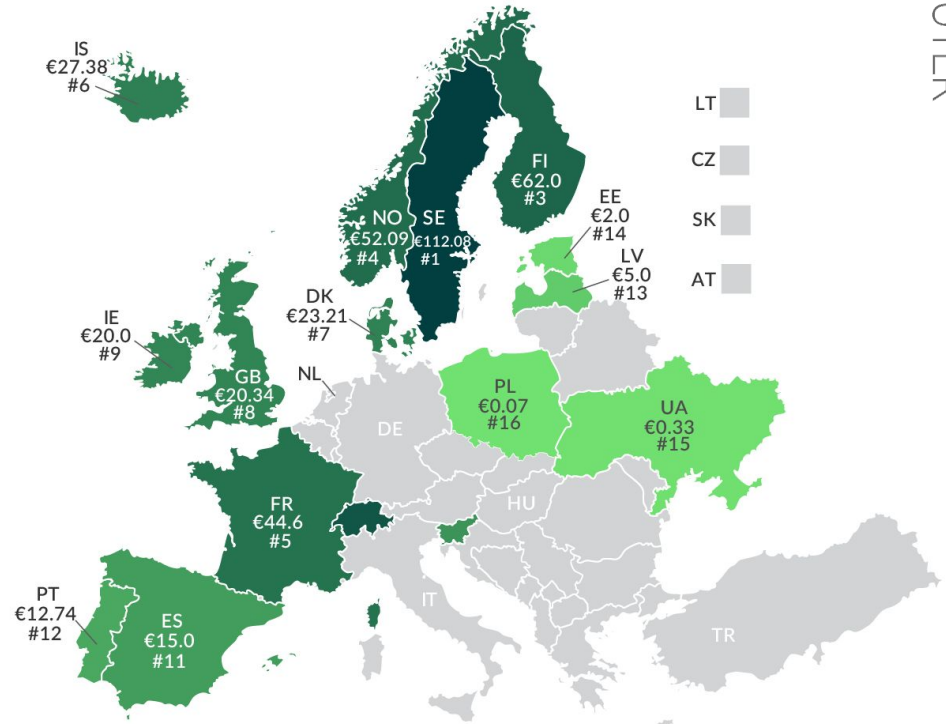


# What are the near term consequences for new mandatory standards?

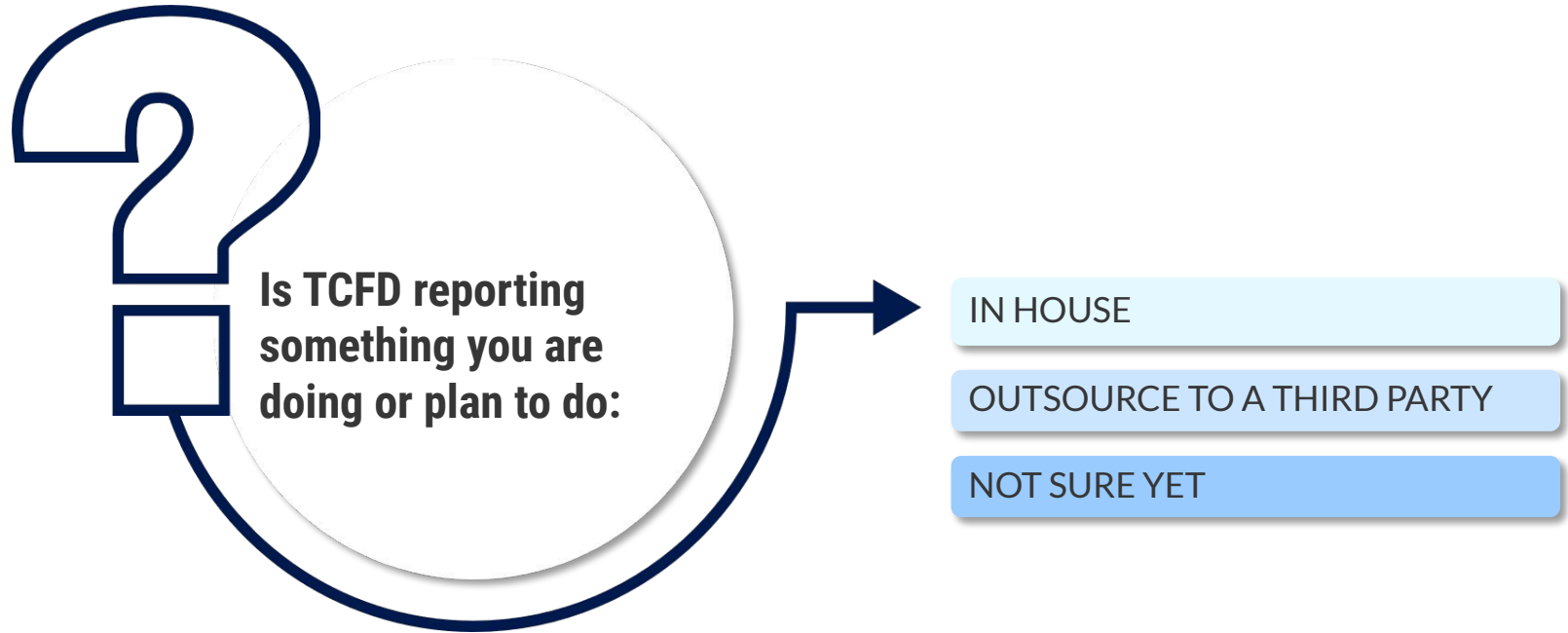
- Climate risks must be quantified (GHG inventory and reporting)
- Expect changes to global ESG reporting (preventing any form of greenwashing)
- TCFD Disclosures have started for FIs in 2021. Larger businesses by April 2022.
- Higher Carbon Taxes will hit energy intensive sectors as of 2022-2023

## Carbon Taxes in Europe

Carbon Tax Rates per Ton of CO<sub>2</sub>e, as of 2019

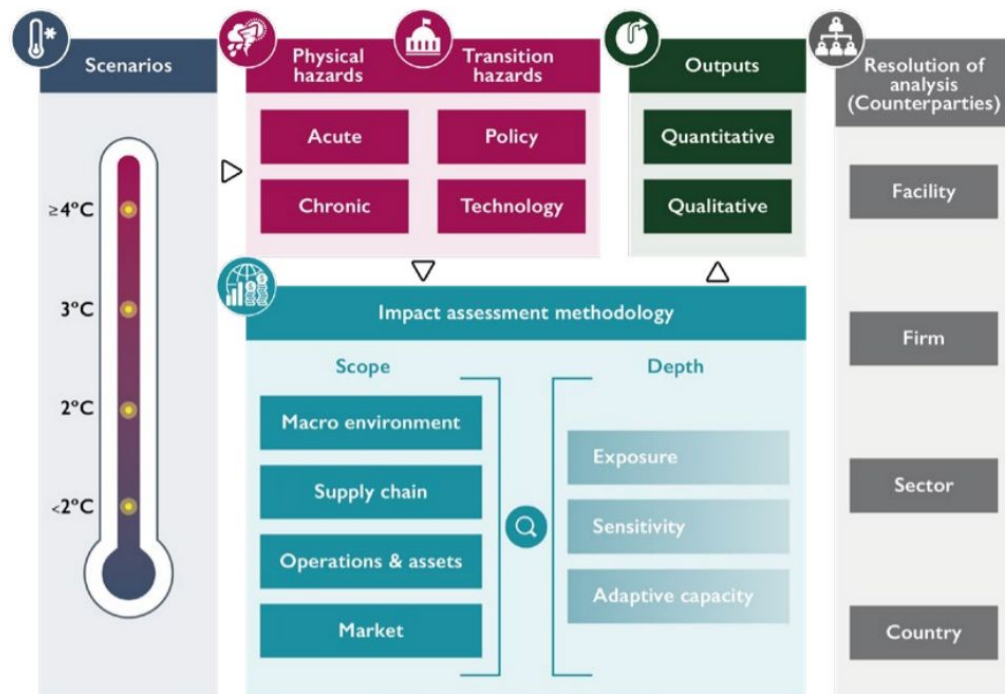


# Poll



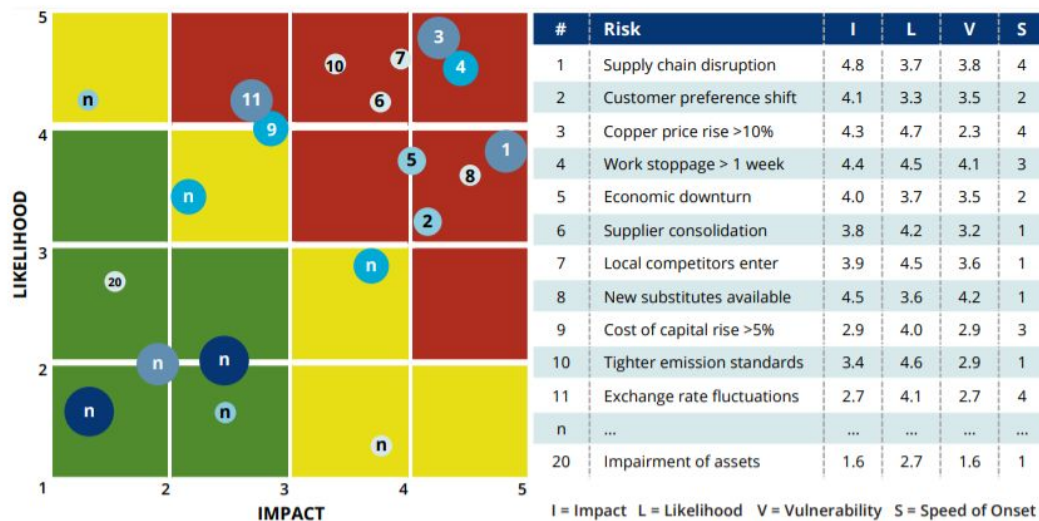
# Our 5 Step robust process to help with your Netzero journey

- Baseline assessment
- Strategy & Governance Review
- Scenario Planning (Physical, Transitional and SBTs)
- Heat Mapping of Risks
- Mitigation and Adaptation programmes



Source: Vivid Economics

# Heat mapping of risks: The why and how?



## LEGEND

Dots represent risk #1 - #n

Dot size and color reflect speed of onset:

● Very Low 
 ● Low 
 ● Medium 
 ● High 
 ● Very High

## ILLUSTRATIVE RATING SCALES FOR CRITERIA

Rating	Impact	Likelihood	Vulnerability	Speed of Onset
5	Extreme	Frequent	Very High	Immediate
4	Major	Likely	High	Rapid
3	Moderate	Possible	Medium	Medium
2	Minor	Unlikely	Low	Slow
1	Incidental	Rare	Very Low	Very Slow

Adapted from COSO's *Risk Assessment in Practice*, October 2012, pp. 4-7 and 16



# LIVE Q&A



# Thank you!

If you'd like to schedule a free consultation, email us at [ejoyce@prescouter.com](mailto:ejoyce@prescouter.com).

# About PreScouter

## PRESCOUTER PROVIDES CUSTOMIZED RESEARCH AND ANALYSIS

PreScouter helps clients gain competitive advantage by providing customized global research. We act as an extension to your in-house research and business data teams in order to provide you with a holistic view of trends, technologies, and markets.

Our model leverages a network of 4,000+ advanced degree researchers, industrial experts, engineers and analysts across the globe to tap into information from small businesses, national labs, markets, universities, patents, startups, and entrepreneurs.

## CLIENTS RELY ON US FOR:



**Innovation Discovery:** PreScouter provides clients with a constant flow of high-value opportunities and ideas by keeping you up to date on new and emerging technologies and businesses.



**Privileged Information:** PreScouter interviews innovators to uncover emerging trends and non-public information.



**Customized Insights:** PreScouter finds and makes sense of technology and market information in order to help you make informed decisions.

**500+** CLIENTS WORLDWIDE

**5,000+** RESEARCH REPORTS CREATED

**150,000+** HOURS OF RESEARCH COMPLETED FOR CLIENTS